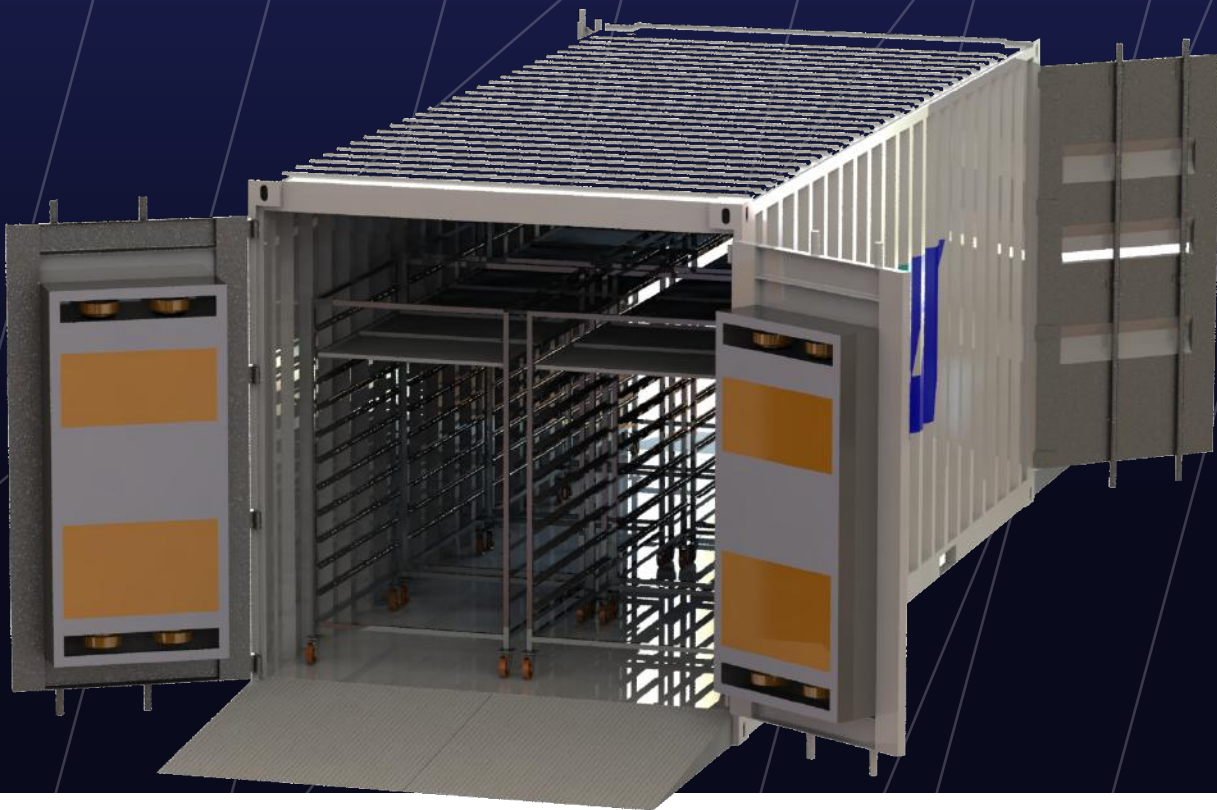


HEUCH

Solar Cold Chain Solutions Dryers & Dehumidifiers



INSTANT RETURN + PROFIT IMPROVEMENT

100% ENERGY INDEPENDENT

- NO GENERATORS OR GRID CONNECTIONS
- NO FUEL COST, LOGISTIC OR QUALITY ISSUES

QUIET, CLEAN + GREEN

- SUSTAINABLE POWER SOURCE
- OPERATE ANYWHERE
- NO NOISE OR EXHAUST POLLUTION

OPERATE ANYWHERE

- TRANSPORTABLE + SECURABLE
- SCALABLE ENERGY PRODUCTION
- REMOTE MONITORING AVAILIABLE

AUSTRALIAN DESIGNED + MADE

- HEAVY DUTY DESIGN
- QUALITY COMPONENTS
- WORLD WIDE SUPPORT+ MAINTENANCE

heuch.com.au | napalima.com



Tailored engineering of renewable energy solutions for remote cooling, drying + power production.



Features

- No fuel, generator or grid connections required
- Zero operating costs
- Low maintenance
- Rugged and reliable design



NAPALIMA.COM
INFO@NAPALIMA.COM
TELEPON: +62 214 585 6675
JAKARTA

HEUCH.COM.AU
COOL@HEUCH.COM.AU
PHONE +61-3-9793 6088
FAX +61-3-9792 2660



HEUCH PTY LTD

A.B.N. 92 085 200 380

Engineered Refrigeration and Process Cooling Equipment

35 NISSAN DRIVE, DANDENONG SOUTH, VICTORIA 3175

PHONE : 61-3-9793 6088 FAX : 61-3-9792 2660

EMAIL : cool@heuch.com.au WEBSITE : www.heuch.com.au



Quality
ISO 9001



Model	Dryer 20 V3-General	
	Manufacturer	Napalima (Indonesia) Heuch (Australia)
	Power	Solar only
	Mains Power	Not Required
	External Colour	White
	Dimensions for Transport LxWxH (External):	6.1m x 2.44m x 2.9m
	Dimensions for Deployment LxWxH (External):	252m ²
	Temperature Style	Single Zone
Common Options:		
	Automatic Control	Yes
	CSC Plating	Yes
	Door Curtains	Yes
	Aluminium or Stainless Steel Sheet Floor	Yes
Zone 1: Entry Zone (Ante Room)		
		Dryer to +50°C
	Duty Style	High/Medium/Low High
	Operational Description	Dryer
	Operating times	24 Hours
	Max Weight per day (av. kg)	400 to 500
	No. Of Compartments	3
	Dimensions for Produce Compartment LxWxH (Internal):	1.8 x 0.5 x 1.6
	Daytime Pull down time (hrs)	24
	Entering Temperature	+25°C
	No of Produce Entry Doors	3
Solar Power System		
	Panel Type	Photo Voltaic
	No Off	144
	Voltage Control	Yes
	Wiring System	Heuch
	Electrical Wiring Standards	AUSNZ:3000
	Over-Current Protection	Fuse
	Disconnect Switch/Type	Per String/Manual
	Mounting Structure	Anodised Aluminium

Australian Refrigeration Council Ltd National Refrigeration Authorisation Number AU05486

HEUCH AIR AND GAS DRIERS * HEUCH INDUSTRIAL WATER CHILLER PACKAGES
ENGINEERED COOLING SYSTEMS * INDUSTRIAL REFRIGERATION * HAZARDOUS AREA EQUIPMENT
SPECIALISED AIR CONDITIONING * ENVIRONMENTAL TEST CHAMBERS * FREEZER ROOMS * COOL ROOMS



HEUCH PTY LTD

A.B.N. 92 085 200 380

Engineered Refrigeration and Process Cooling Equipment

35 NISSAN DRIVE, DANDENONG SOUTH, VICTORIA 3175

PHONE : 61-3-9793 6088 FAX : 61-3-9792 2660

EMAIL : cool@heuch.com.au WEBSITE : www.heuch.com.au



Quality
ISO 9001



Battery System

Battery Type	Industrial Quality AGM GELL CELL (VRLA)
Maintenance type	Maintenance Free
Design Life	15 Years
Cell type/No Off	Single / 12 @ 2V
Chassis	Heuch Type 1
Voltage Controller	MPPT
Transportable	Yes
Standard	IATA DGR Clause A67
Recyclable	Yes
Deep Discharge Protection	DIN 43 539 T5
Temperature Monitored	Yes
Electrical Wiring Standards	AUSNZ:3000
Over-Current Protection	Fuse
Disconnect Switch/Type	Per String/Manual

Cooling System

Type	Heat Pump
No. of Drying Zones	3
Environmental Style	Fully Sealed
Condenser	Air-Cooled
Condenser Fans	Variable Speed
Compressor	Hermetic
Compressor Motor	AC/DC
Cooler	Induced Draft Air
Cooler Fan	Variable Speed
Control System	Digital Display
Defrost/Type	None

Building & Insulation

Construction Type	ISO Container
CSC Plating	Yes
Insulation/minimum Thickness	Yes/100mm
Floor type	Insulated with wearing surface
Doors/Type	Yes/Hinged
Door Curtains	Yes
Condensate Drain	External
LED internal Lighting	Yes
LED Entry Lighting	Yes

Australian Refrigeration Council Ltd National Refrigeration Authorisation Number AU05486

HEUCH AIR AND GAS DRIERS * HEUCH INDUSTRIAL WATER CHILLER PACKAGES
ENGINEERED COOLING SYSTEMS * INDUSTRIAL REFRIGERATION * HAZARDOUS AREA EQUIPMENT
SPECIALISED AIR CONDITIONING * ENVIRONMENTAL TEST CHAMBERS * FREEZER ROOMS * COOL ROOMS