

# HEUCH

## Solar Cold Chain Solutions Mobile Freezers



### INSTANT RETURN + PROFIT IMPROVEMENT

#### 100% ENERGY INDEPENDENT

- NO GENERATORS OR GRID CONNECTIONS
- NO FUEL COST, LOGISTIC OR QUALITY ISSUES
- 24 HOUR OPERATION

#### QUIET, CLEAN + GREEN

- SUSTAINABLE POWER SOURCE
- OPERATE ANYWHERE
- NO NOISE OR EXHAUST POLLUTION

#### OPERATE ANYWHERE

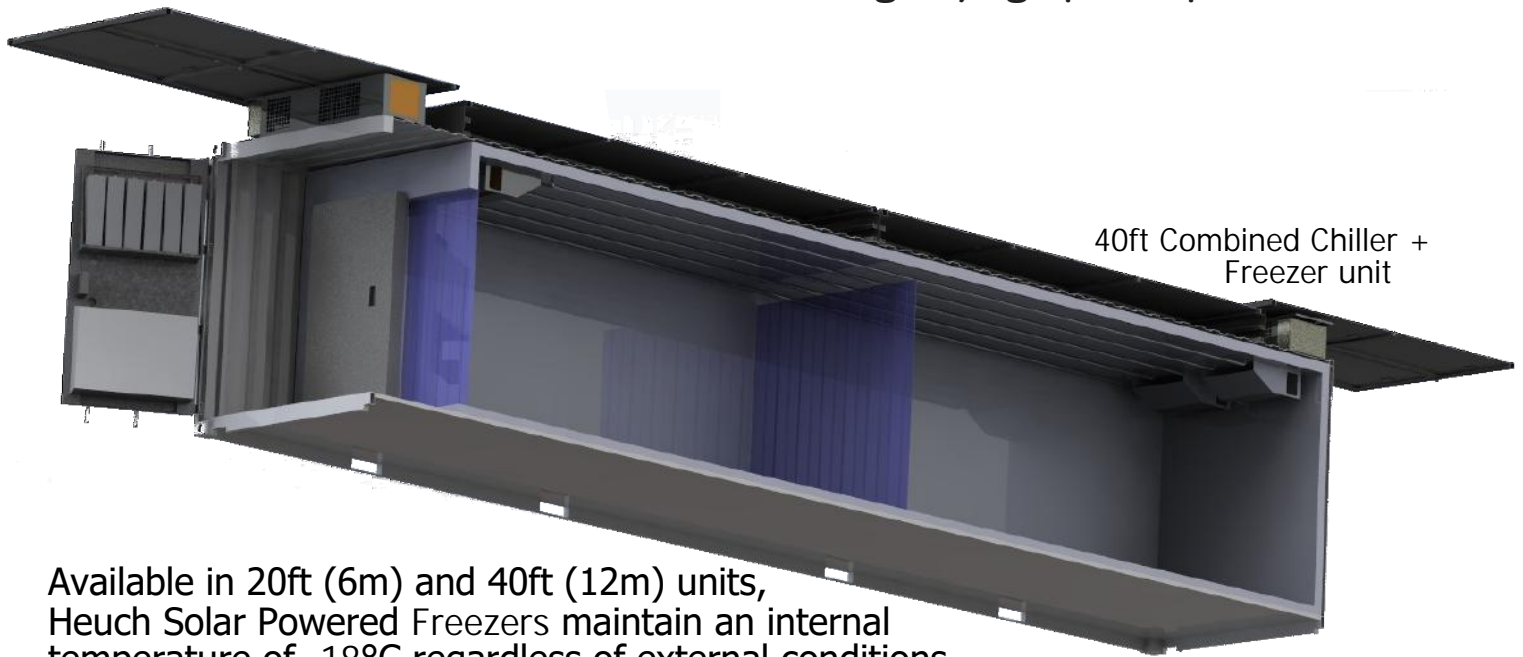
- TRANSPORTABLE + SECURABLE
- 15 MINUTES FROM UNLOADING TO OPERATION
- REMOTE MONITORING AVAILIABLE

#### AUSTRALIAN DESIGNED + MADE

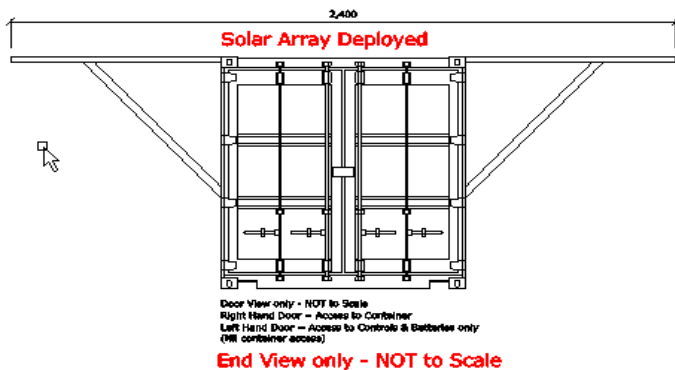
- HEAVY DUTY DESIGN
- QUALITY COMPONENTS
- WORLD WIDE SUPPORT+ MAINTENANCE

[heuch.com.au](http://heuch.com.au) | [napalima.com](http://napalima.com)

Tailored engineering of renewable energy solutions for remote cooling, drying + power production.



Available in 20ft (6m) and 40ft (12m) units, Heuch Solar Powered Freezers maintain an internal temperature of  $-18^{\circ}\text{C}$  regardless of external conditions, 24 hours a day.



Fully transportable world wide to facilitate easy and rapid transport to site. Once unloaded, solar array is deployed and unit running in under 15 minutes with no external support

## Features

- No fuel, generator or grid connections required
- Zero operating costs Low maintenance
- Rugged and reliable design
- Quiet, clean and green
- Additional power can be harvested for other applications



NAPALIMA.COM  
INFO@NAPALIMA.COM  
TELEPON: +61 21 4585 6675  
JAKARTA

HEUCH.COM.AU  
COOL@HEUCH.COM.AU  
PHONE +61-3-9793 6088  
FAX +61-3-9792 2660



# HEUCH PTY LTD

A.B.N. 92 085 200 380

## Engineered Refrigeration and Process Cooling Equipment

35 NISSAN DRIVE, DANDENONG SOUTH, VICTORIA 3175

PHONE : 61-3-9793 6088 FAX : 61-3-9792 2660

EMAIL : [cool@heuch.com.au](mailto:cool@heuch.com.au) WEBSITE : [www.heuch.com.au](http://www.heuch.com.au)



Quality  
ISO 9001



Model	Freezer 20 V3	Freezer 40 V3
Manufacturer	Napalima (Indonesia) Heuch (Australia)	Napalima (Indonesia) Heuch (Australia)
Power	Solar only	Solar only
Mains Power	Not Required	Not Required
External Colour	White	White
Dimensions for Transport LxWxH (External):	6.1m x 2.44m x 2.9m	12.2m x 2.44m x 2.9m
Dimensions for Deployment LxWxH (External):	8.2m x 7.2m x 2.9m	14.2m x 7.2m x 2.9m
Temperature Style	Single Zone	Single Zone
<b>Common Options:</b>		
Automatic Control	Yes	Yes
CSC Plating	Yes	Yes
Door Curtains	Yes	Yes
Aluminium or Stainless Steel Sheet Floor	Yes	Yes
<b>Zone 1: Entry Zone (Ante Room)</b>		
Operating times	Chiller (+4°C) 24 hours	Chiller (+4°C) 24 hours
Duty Style	High/Medium/Low Medium	High/Medium/Low Medium
Operational Description	Entry/Storage	Entry/Storage
<b>Zone 2: Storing Zone</b>		
Operating times	Freezer (-18°C) 24 hours	Freezer (-18°C) 24 hours
Duty Style	High/Medium/Low Medium	High/Medium/Low Medium
Operational Description	Bulk Storage	Bulk Storage
<b>Solar Power System</b>		
Panel Type	Photo Voltaic	Photo Voltaic
No Off	26	44
Voltage Control	Yes	Yes
Wiring System	Heuch	Heuch
Electrical Wiring Standards	AUSNZ:3000	AUSNZ:3000
Over-Current Protection	Fuse	Fuse
Disconnect Switch/Type	Per String/Manual	Per String/Manual
Mounting Structure	Anodised Aluminium	Anodised Aluminium

Australian Refrigeration Council Ltd National Refrigeration Authorisation Number AU05486

HEUCH AIR AND GAS DRIERS \* HEUCH INDUSTRIAL WATER CHILLER PACKAGES  
ENGINEERED COOLING SYSTEMS \* INDUSTRIAL REFRIGERATION \* HAZARDOUS AREA EQUIPMENT  
SPECIALISED AIR CONDITIONING \* ENVIRONMENTAL TEST CHAMBERS \* FREEZER ROOMS \* COOL ROOMS



# HEUCH PTY LTD

A.B.N. 92 085 200 380

## Engineered Refrigeration and Process Cooling Equipment

35 NISSAN DRIVE, DANDENONG SOUTH, VICTORIA 3175

PHONE : 61-3-9793 6088 FAX : 61-3-9792 2660

EMAIL : [cool@heuch.com.au](mailto:cool@heuch.com.au) WEBSITE : [www.heuch.com.au](http://www.heuch.com.au)



Quality  
ISO 9001



<b>Battery System</b>			
	Battery Type	Industrial Quality AGM GELL CELL (VRLA)	Industrial Quality AGM GELL CELL (VRLA)
	Maintenance type	Maintenance Free	Maintenance Free
	Design Life	15 Years	15 Years
	Cell type/No Off	Single / 12 @ 2V	Single / 12 @ 2V
	Chassis	Heuch Type 1	Heuch Type 2
	Transportable	Yes	Yes
	Standard	IATA DGR Clause A67	IATA DGR Clause A67
	Recyclable	Yes	Yes
	Deep Discharge Protection	DIN 43 539 T5	DIN 43 539 T5
	Temperature Monitored	Yes	Yes
	Electrical Wiring Standards	AUSNZ:3000	AUSNZ:3000
	Over-Current Protection	Fuse	Fuse
	Disconnect Switch/Type	Per String/Manual	Per String/Manual
<b>Cooling System</b>			
	Type	Refrigerated	Refrigerated
	No. of Cooling Zones	2	2
	Environmental Style	Fully Sealed	Fully Sealed
	Condenser	Air-Cooled	Air-Cooled
	Condenser Fans	Variable Speed	Variable Speed
	Compressor	Hermetic	Hermetic
	Compressor Motor	DC	DC
	Cooler	Induced Draft Air	Induced Draft Air
	Cooler Fan	Variable Speed	Variable Speed
	Control System	Digital Display	Digital Display
	Defrost/Type	Automatic/Reverse Cycle	Automatic/Reverse Cycle
<b>Building &amp; Insulation</b>			
	Construction Type	ISO Container	ISO Container
	CSC Plating	Yes	Yes
	Insulation/minimum Thickness	Yes/100mm	Yes/100mm
	Floor type	Insulated with wearing surface	Insulated with wearing surface
	Doors/Type	Yes/Sliding	Yes/Sliding
	Door Curtains	Yes	Yes
	Condensate Drain	External	External
	LED internal Lighting	Yes	Yes
	LED Entry Lighting	Yes	Yes

Australian Refrigeration Council Ltd National Refrigeration Authorisation Number AU05486

HEUCH AIR AND GAS DRIERS \* HEUCH INDUSTRIAL WATER CHILLER PACKAGES  
ENGINEERED COOLING SYSTEMS \* INDUSTRIAL REFRIGERATION \* HAZARDOUS AREA EQUIPMENT  
SPECIALISED AIR CONDITIONING \* ENVIRONMENTAL TEST CHAMBERS \* FREEZER ROOMS \* COOL ROOMS